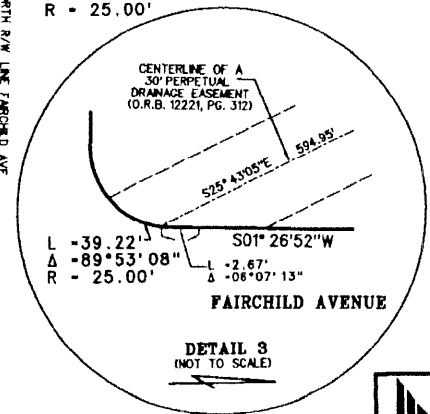
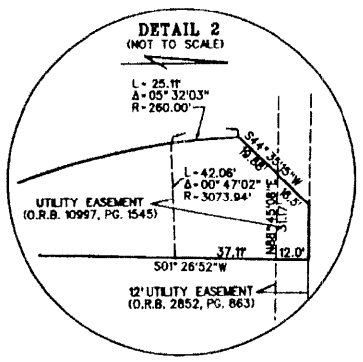
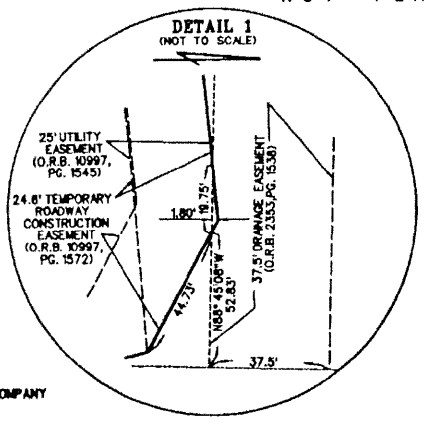
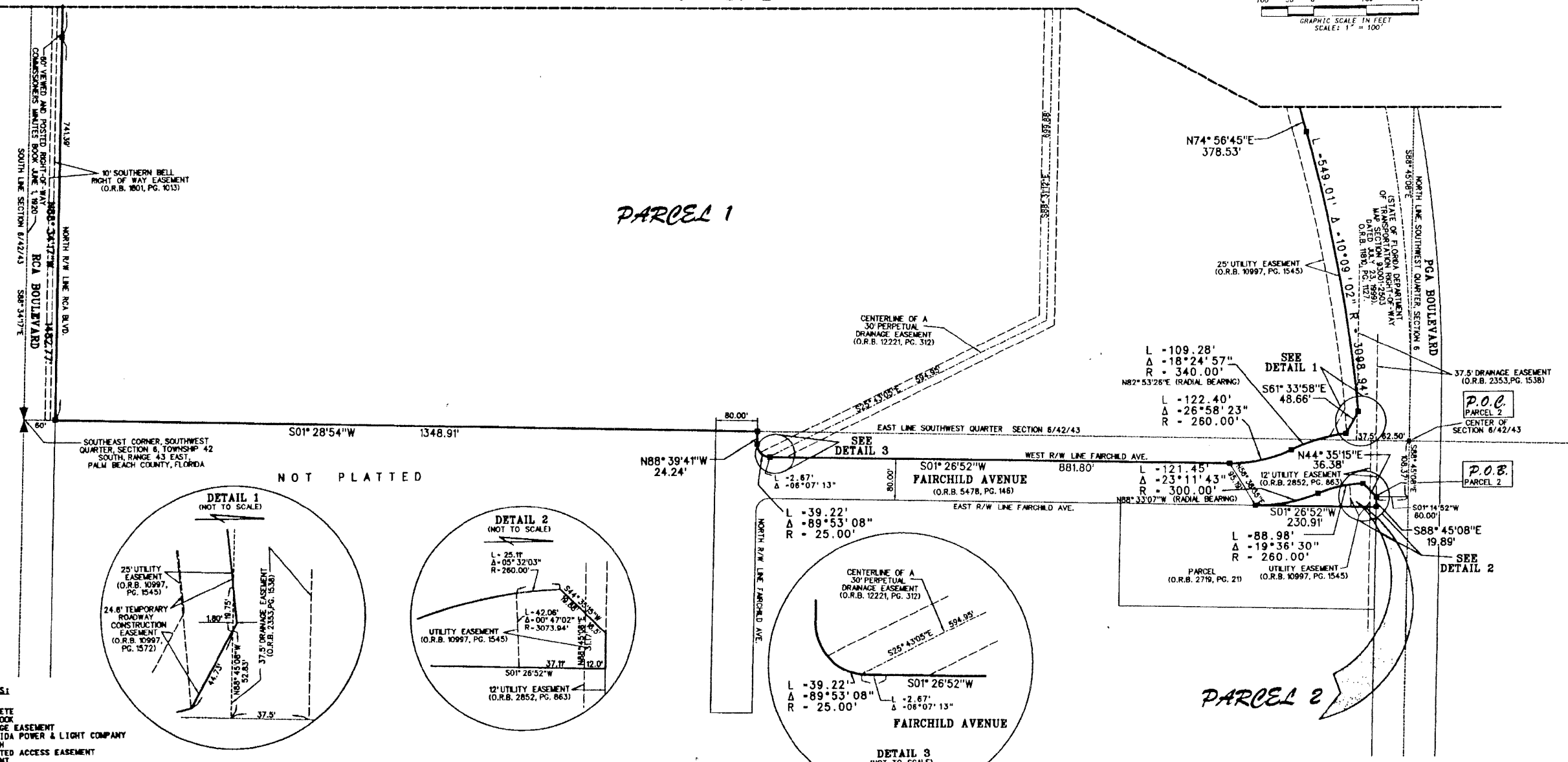
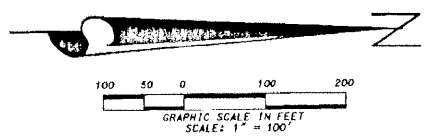


# LEGACY PLACE

SITUATE IN SECTION 6, TOWNSHIP 42 SOUTH,  
RANGE 43 EAST, CITY OF PALM BEACH GARDENS,  
PALM BEACH COUNTY, FLORIDA  
APRIL, 2001 SHEET 3 OF 3

MATCH LINE - SEE SHEET 2



- ABBREVIATIONS:**
- Δ = DELTA
  - CONC. = CONCRETE
  - D.B. = DEED BOOK
  - D.E. = DRAINAGE EASEMENT
  - F.P.L. = FLORIDA POWER & LIGHT COMPANY
  - L = ARC LENGTH
  - L.A.E. = LIMITED ACCESS EASEMENT
  - MON. = MONUMENT
  - N.P.B.C.I.D. = NORTHERN PALM BEACH COUNTY IMPROVEMENT DISTRICT
  - O.R.B. = OFFICIAL RECORD BOOK
  - P.B. = PLAT BOOK
  - P.B.C. = PALM BEACH COUNTY
  - PG. = PAGE
  - P.S.M. = PROFESSIONAL SURVEYOR AND MAPPER
  - P.O.B. = POINT OF BEGINNING
  - P.O.C. = POINT OF COMMENCEMENT
  - R = RADIUS
  - R.P.B. = ROAD PLAT BOOK

- LEGEND:**
- 1) DENOTES A SET 4"x4" CONCRETE MONUMENT STAMPED "PRM LB 4431" PERMANENT REFERENCE MONUMENT (P.R.M.), UNLESS OTHERWISE NOTED.
  - 2) DENOTES A SET PK NAIL & DISK STAMPED "PRM LB 4431" PERMANENT REFERENCE MONUMENT (P.R.M.), UNLESS OTHERWISE NOTED.

**LIDBERG LAND SURVEYING, INC.**  
 675 West Indian Lakes Road, Suite 200  
 Jupiter, Florida 33458 TEL. 561-746-6454

|  |              |      |                 |
|--|--------------|------|-----------------|
| CAD: K:\USTATON\06-42-43\2310306\2310306.DGN |              |      |                 |
| REF.   | FB.          | PG.  | JOB 00-231(306) |
| FLD.   | OFF. L.J.C.  |      | DATE 12/08/00   |
| CKD. D.C.L.                                  | SHEET 3 OF 3 | DWG. | D00-231P        |